

Portland Paragraph Ideas

Paul Bunyan Statue Catlin Gabel

A Art Museum Allow Me Statue	B Big Pink BNSF Railroad Bridge Broadway Bridge Benson Billore's	C Chinese Garden Columbia River Chinatown Convention Center	D Dragon Boats Downtown
E Elephant Park Emanuel Hospital	F Fremont Bridge Forest Park Forestry Center	G Great Blue Heron Grant Park	H Hawthorne Bridge
I Italian fest, I-5 International Test Rose Garden Mr Menamins	J Japanese Garden Jamison Park	K Krueger's farm Koin Tower Keller Auditorium OHSU	L Lincoln High Lumberjax Asa Lovejoy Lloyd Center PPS
M Mac Club Morrison Bridge Marquam Bridge Mill Pond Park Mount Tabor	N New Market Theater MAX	O Old Town Oaks Park OMSI Oregon Zoo	P Pittock Mansion PGE Park Pioneer Place Portland Water PDX
Q	R Rose Garden RAZ Rose Festival Ross Island Brandon Roy	S St. Johns Bridge Steel Bridge Bridge Sammie Island Saturday Market	T Bureau Portlandia Sellwood Bridge
U Umbrella Man Union Shibusya	V	W Waterfront Washington Park Willamette River World's Smallest Park	XYZ Zoo

Portland Japanese Garden

geohack/geohack.php?pagename=Portland_Japanese_Garden¶ms=45.51872_N_122.7080_W_
From Wikipedia, the free encyclopedia

The **Portland Japanese Garden** is a traditional Japanese garden occupying 5.5 acres (22,000 m²), located within Washington Park in the west hills of Portland, Oregon, USA at 45.51872°N 122.7080°W (<http://stable.toolserver.org/geohack/geohack.php?>



Wintertime vista

[pagename=Portland_Japanese_Garden¶ms=45.51872_N_122.7080_W_](http://stable.toolserver.org/geohack/geohack.php?pagename=Portland_Japanese_Garden¶ms=45.51872_N_122.7080_W_)).

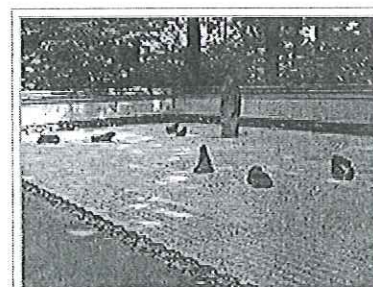
Contents

- 1 History and awards
- 2 Design
- 3 Features
- 4 Logistics
- 5 See also
- 6 External links

History and awards

The garden was designed by Professor Takuma Tono beginning in 1963, though the garden opened to the public in 1967.

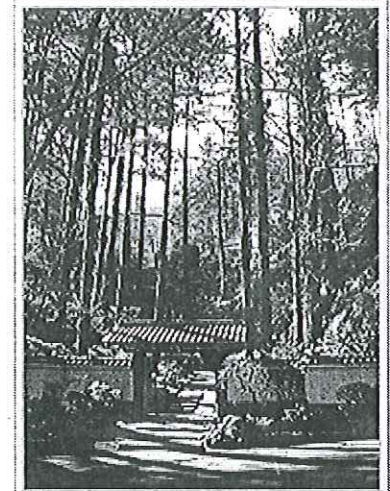
In a study conducted by the *Journal of Japanese Gardening*, it was ranked first out of 300 public Japanese gardens outside of Japan and considered to be one of the most authentic. This is notable because a traditional Japanese garden normally takes hundreds of years to evolve and mature, but the Portland Japanese Garden evolved much more quickly—a fusion of hurried western style and stately eastern expression.



Sand and stone zen garden.

Design

According to traditional design, the garden combines **three elements** which represent the earth: **stone** represents mountains and islands for strength and support, **water** is the center and represents purity, and **plants** grace it with texture, color and growth. Themes include the terrain from Portland to the Cascade Mountain Range and subtle "hide and reveal" so movement through the garden reveals continuously changing views.



Lower entrance

Features

The garden has **five major subgardens**, each of a different degree of formality:

- The **Strolling Pond Garden** is the largest and contains multiple areas. In one, the path has rocks arranged as the constellation Big Dipper. Another has an antique multi tiered pagoda lantern, **a gift from Portland's sister city of Sapporo** with ornamental rocks forming the shape of Hokkaidō island and a red stone for Sapporo. Several ornate or whimsical bridges cross the creeks between ponds.
- The **Natural Garden** features **multiple ponds, waterfalls and streams**. Trees, shrubs, ferns and mosses grow in their natural state. .
- The **Sand and Stone Garden** features **weathered stones** rising from rippled sand suggestive of the ocean. The tranquil rake patterns are often seen in dry gardens known as *karesansui* in Japanese.
- A **Flat Garden** is typically found in urban garden design, but here it contrasts with the park folds and contours. **Raked white sand** represents **water and vividly contrasts with lawn**, moss, evergreens and azaleas.
- The **Tea Garden** has two sections each devoted to enhancing the tea ceremony. The outer area is the **waiting station**. The inner surrounds the **authentic tea house**.

Logistics

The *Japanese Garden* is close to Washington Park's main entrance, at the top of Park Place, just above and a short walk of the International Rose Test Garden. Parking can be scarce on sunny days, but TriMet line 63 stops nearby.

The Portland Japanese Garden is across from the tennis courts. Also, the Washington Park and Zoo Railroad has a station by the rose garden. During the summer, it connects to the Oregon Zoo, World Forestry Center, MAX, Portland Children's Museum, Oregon Vietnam Veterans Memorial and Hoyt Arboretum.

See also

- List of botanical gardens in the United States
- Portland, Oregon
- Portland Classical Chinese Garden

External links

- Official Website (<http://www.japanesegarden.com/>)
- The Journal of Japanese Gardening (<http://www.rothteien.com/>)

Retrieved from "http://en.wikipedia.org/wiki/Portland_Japanese_Garden"

Categories: [Botanical gardens in Portland, Oregon](#) | [Japanese gardens](#)

- This page was last modified on 18 May 2009 at 22:55.
- Text is available under the Creative Commons Attribution-ShareAlike License; additional terms may apply. See Terms of Use for details. Wikipedia® is a registered trademark of the Wikimedia Foundation, Inc., a non-profit organization.